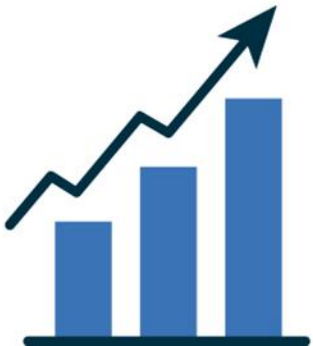
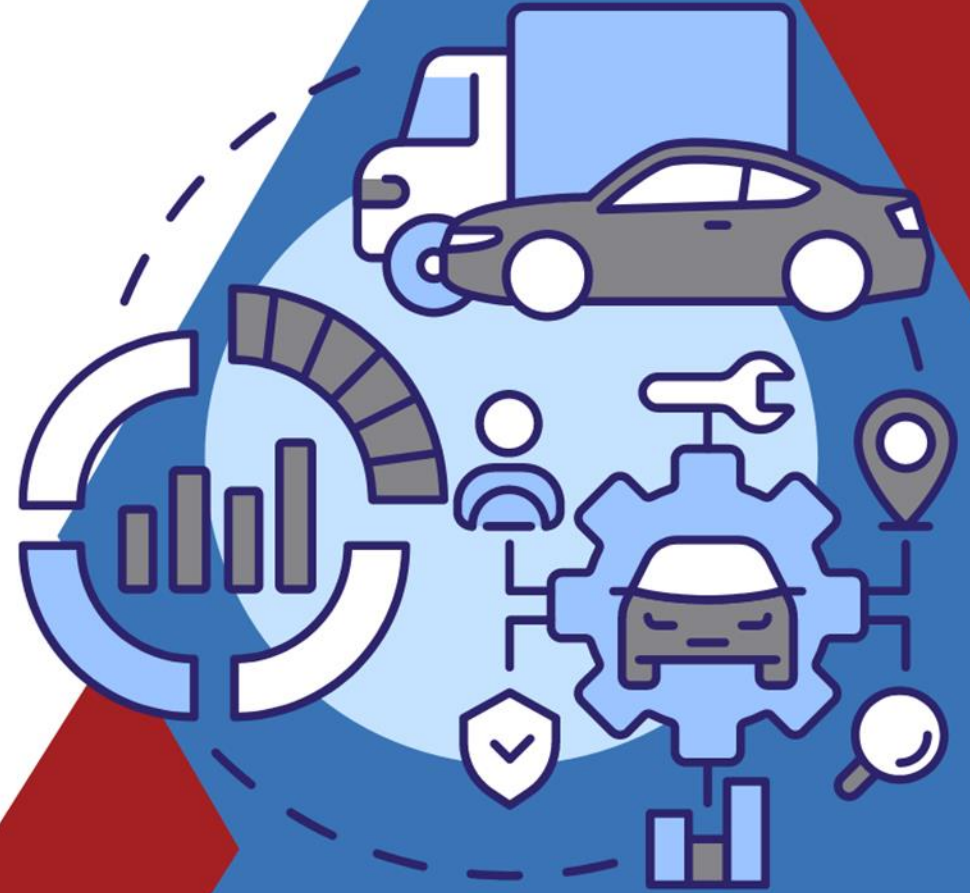
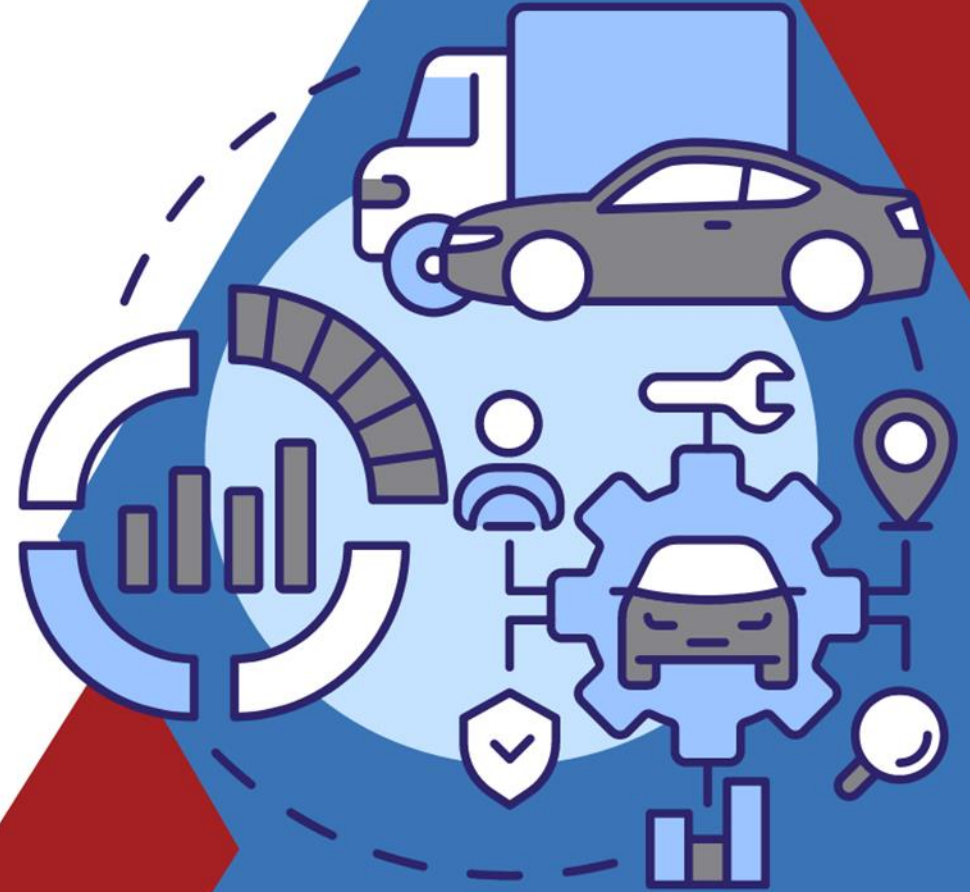


WELCOME TO COMMAND 24

Learn. Network. Engage.



Agile Fleet Alliances



Complex World of Fleet

Electrification



Insurance



Vehicle Management



Incident Reports



Users/Drivers




Reporting



Parking



Fuel



Safety



Maintenance



Tracking



Introducing

Agile Fleet Alliances!!!!

Effortlessly manage your fleet with the support of an intentional partner ecosystem.

COMMAND 24



Partnership

Building *meaningful* relationships with technology's leading solutions.

COMMAND 24



Staying True

CORE VALUES



Strong Partnerships

Building and maintaining strong partnerships is the foundation of our success.



Initiative

We take responsibility for our roles. We're proactive and think outside the box.



Approachability

We are friendly, unpretentious and welcoming.



Integrity

We are trustworthy, fair, and ethical. We expect the same from our colleagues, clients, and partners.



Flexibility

We are agile. We happily adapt to changing priorities and conditions to achieve success.

COMMAND 24



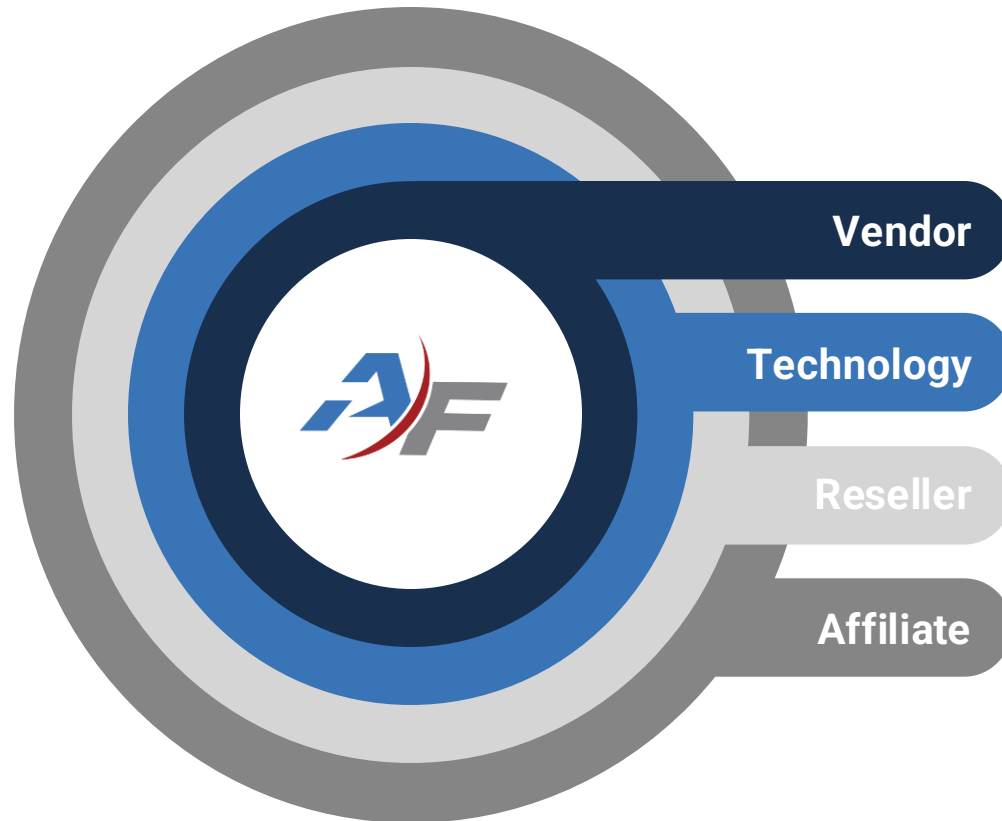
Our Promise

We hold the relationships we've cultivated with our clients over the years in the highest regard and are **committed** to preserving and strengthening them.

COMMAND 24



Alliance Types



- ▶ Advances FleetCommander
- ▶ Enhances with FleetCommander
- ▶ More ways to purchase FleetCommander
- ▶ Provides our clients standalone value.

Our Mission

The Agile Fleet Alliance program equips our customers with the essential resources to drive excellence in all aspects of fleet management, fostering growth and adaptability in an ever-evolving landscape.

COMMAND 24



Welcome Bestpass



Ken Borowski

Director Channel Sales & Development

(847) 366-8140

ken.borowski@fleetworthy.com





Bestpass by Fleetworthy

Partnership Introduction



- Ken Borowski; Director; Channel and Partnerships

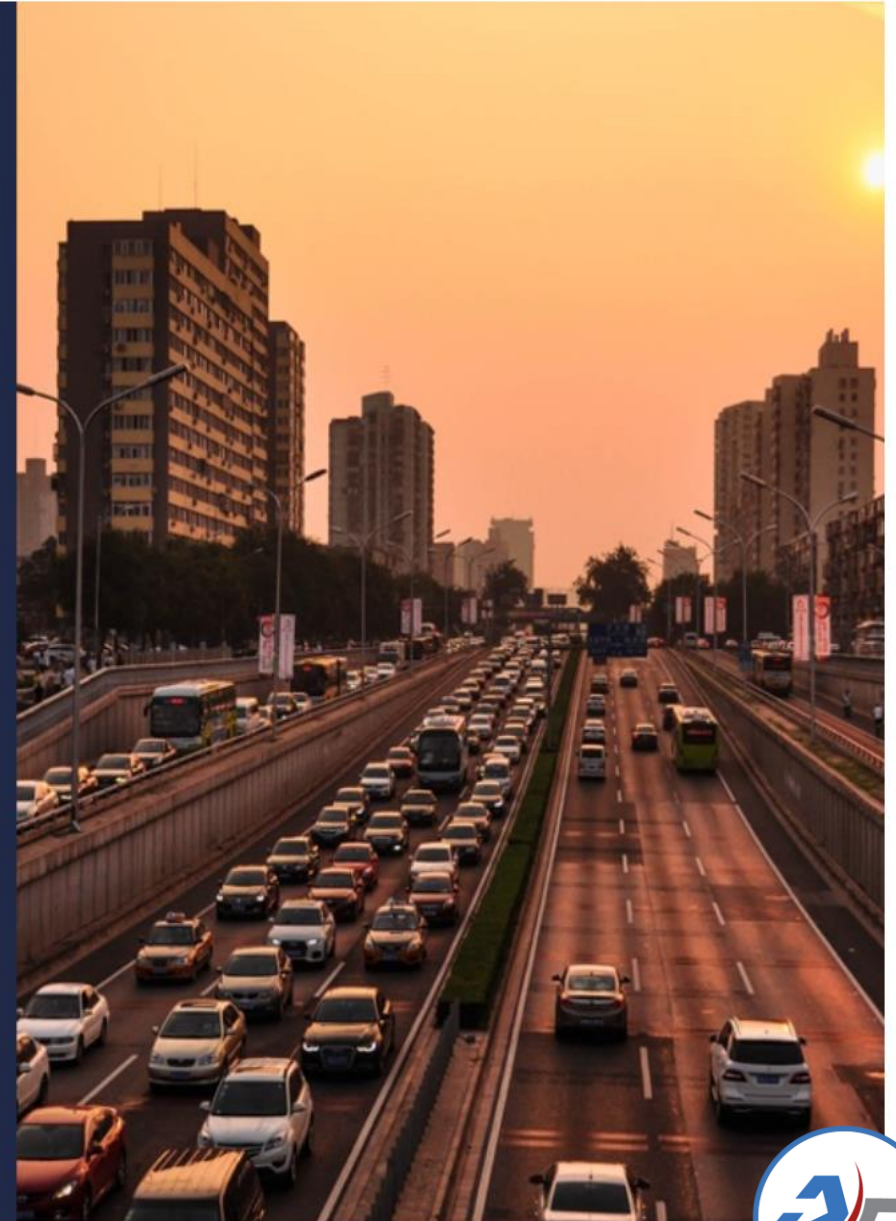


Bestpass by Fleetworthy Overview



What is Bestpass?

- Bestpass is the Nation's toll Management Leader
- Consolidate Toll to One Invoice & One Payment
- Simplify Toll Data & Organization
- Provide top-rated Customer Service
- Solve complex situations with our team of Toll Experts
- Our customers stay with us



Current Tolling Landscape

60+ Tolling Authorities Nationwide

All with different:

- Accounts
- Payment processes
- Reporting capabilities
- Types of coverage
- Device types
- Support

BESTPASS TOLLING PARTNERS



Bestpass by the numbers



22

Years in Business



600+

Employees



15K

Fleet Customers



60+

Tolling Authority
Partnerships

TxDOT
Pennsylvania Turnpike Commission
Southern Connector
New York State Thruway Authority
Illinois Tollway
The Port Authority of NY & NJ
Maryland Transportation Authority
and more!



18K

Consumers



2.1M+

Vehicles on
the Road



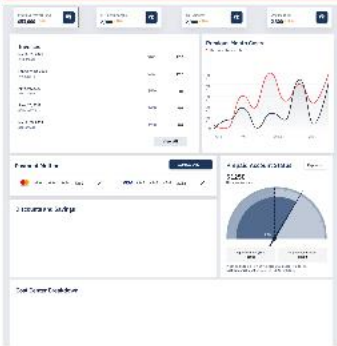
1.9B

Toll Transactions
a Year



Problems We Solve

Lack of visibility



- Vehicle reporting
- Cost center reporting
- Proactive quarterly business reviews with customer success team

Manual processing



- One centralized account
- Automated toll processing and payment, elimination of paper toll
- All branches can now focus on the business instead of toll

Excess spend



- Maximized discounts
- Reporting on high plate toll
- Optimized transponder and plate coverage, violation mitigation, prevention and processing, AMIS

Incomplete coverage



- Optimized transponder and/or plate coverage for vehicles based on travel patterns
- Every vehicle on file with every authority necessary based on travel patterns
- Ensuring devices are optimized at the vehicle level to ensure that you are getting the best possible rate



Hardware

Complete Pass

One device, one account, one point of contact, and one partner for toll

Bypass compatible

COMPLETE PASS BENEFITS

- Seamless coast-to-coast toll coverage that saves you money with tolling discounts
- Avoid future violations: Bestpass will ensure your plates are on file with all relevant tolling authorities so you are covered everywhere you travel
- On-demand toll reporting for your fleet that includes toll charges by vehicle and allows your fleet to set usage alerts to flag unauthorized use

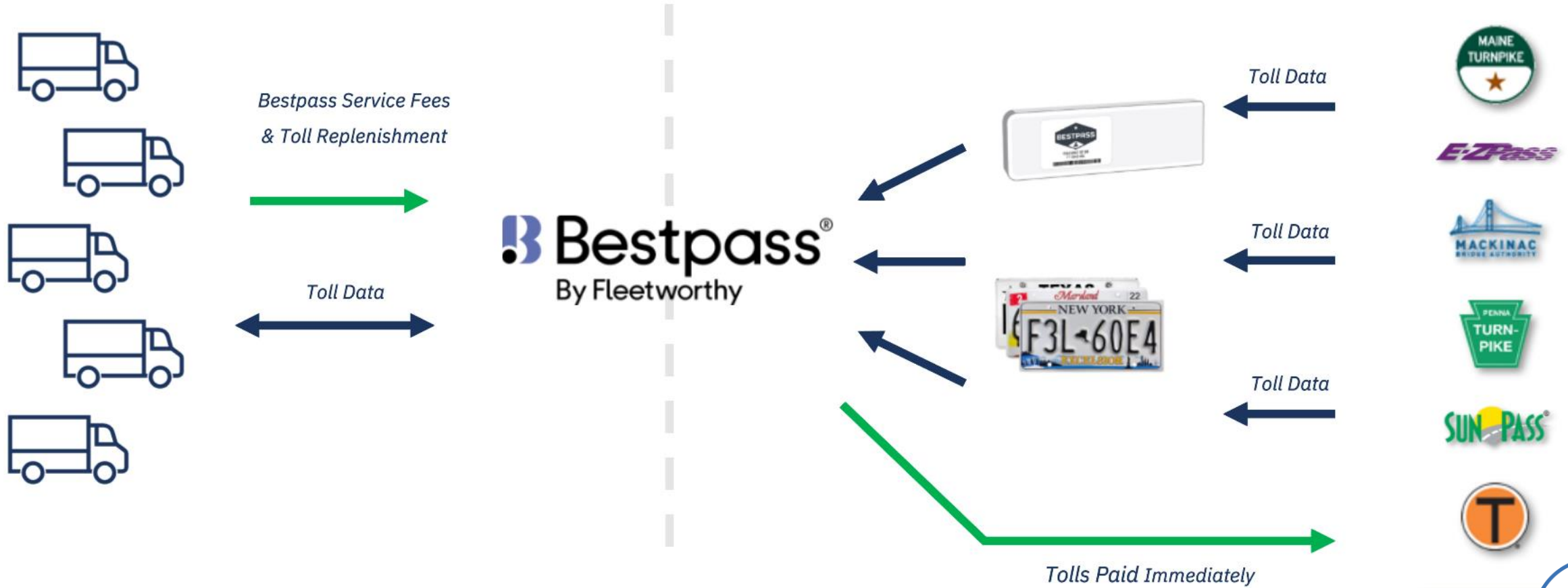


-Small Transponder: 2.5 by 9 inches

-Easy to install

-Cost effective

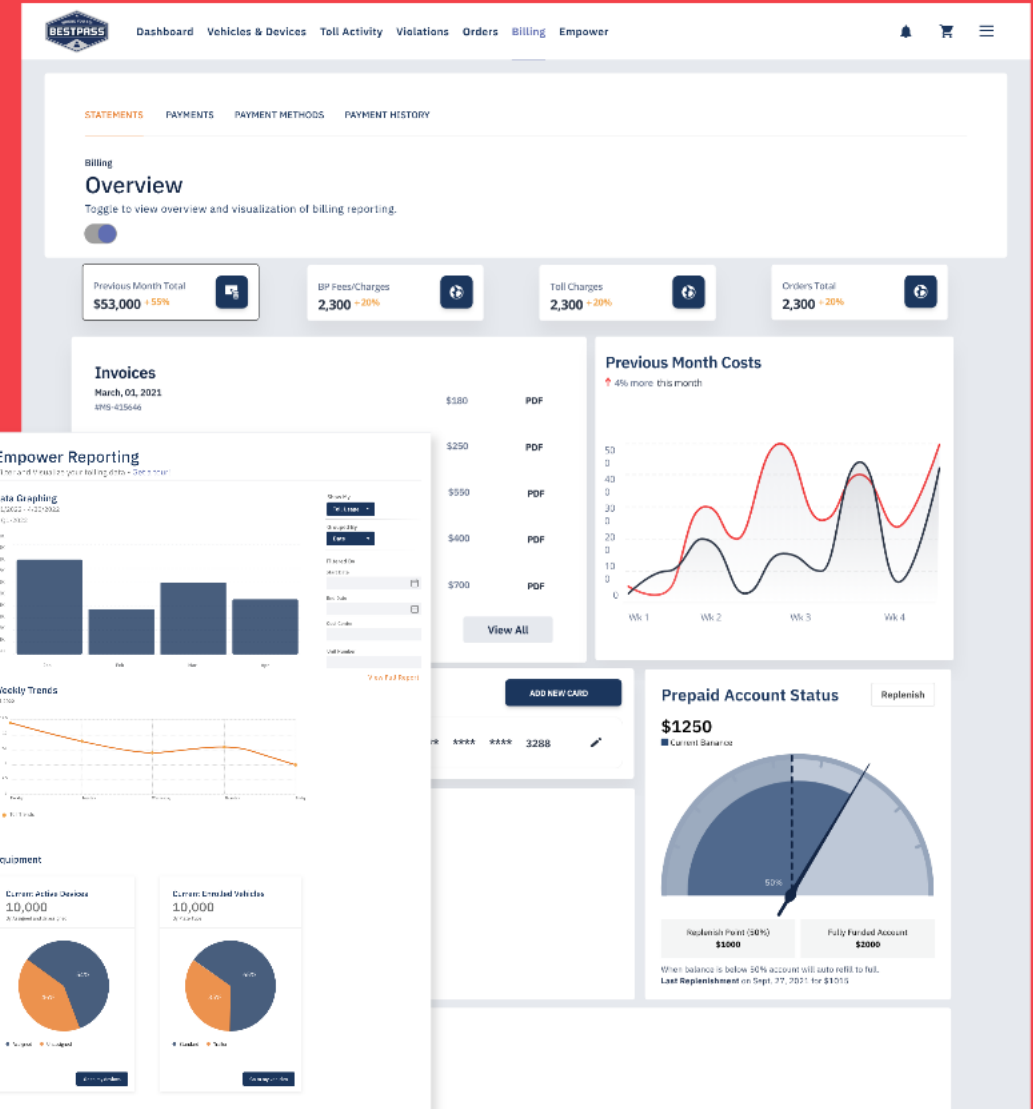
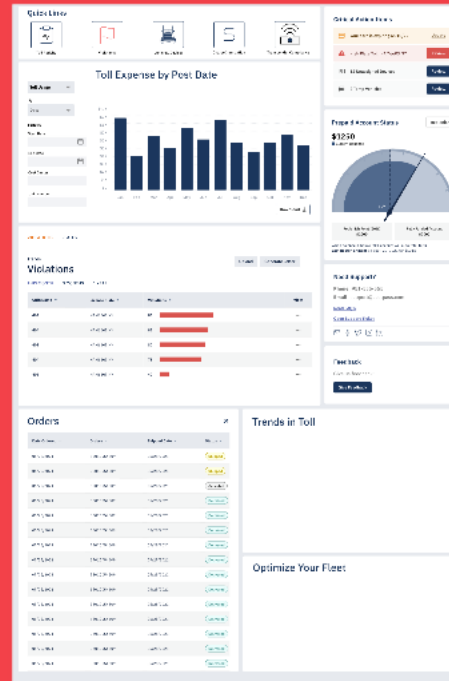
We Manage your Agency Relationships



Data Visualization & Insight



- Easily manage vehicle and trailer coverage
- Quickly view costs per vehicle, location, etc.
- Get alerts on toll usage
- Easily allocate costs to business divisions, customers, etc.



We believe...

Toll is a byproduct of doing business
and a distraction

We provide support, insight and eliminate
the headache

We simplify toll into one statement, one
payment and one service



Welcome Sawatch Labs

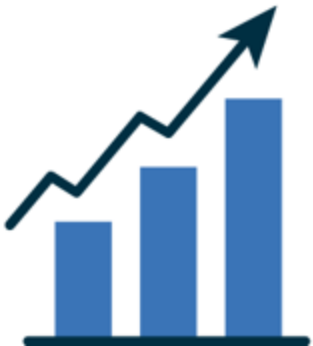


Mary Till

Senior Biz. Dev. Specialist

(720) 227-6713

mary.till@wexinc.com



About Sawatch Labs



Founded in 2017

- WEX acquisition 2024



Deep expertise in

- Energy modeling
- Duty cycle characterization
- Data analytics
- Fleet electrification & sustainability



Neutral advisor, trusted by 180+ fleets

- Municipal
- University
- State
- Federal

1B+
miles analyzed

100M
trips accessed

~\$600M
savings potential

~6M
annual GHG reduction (tons)



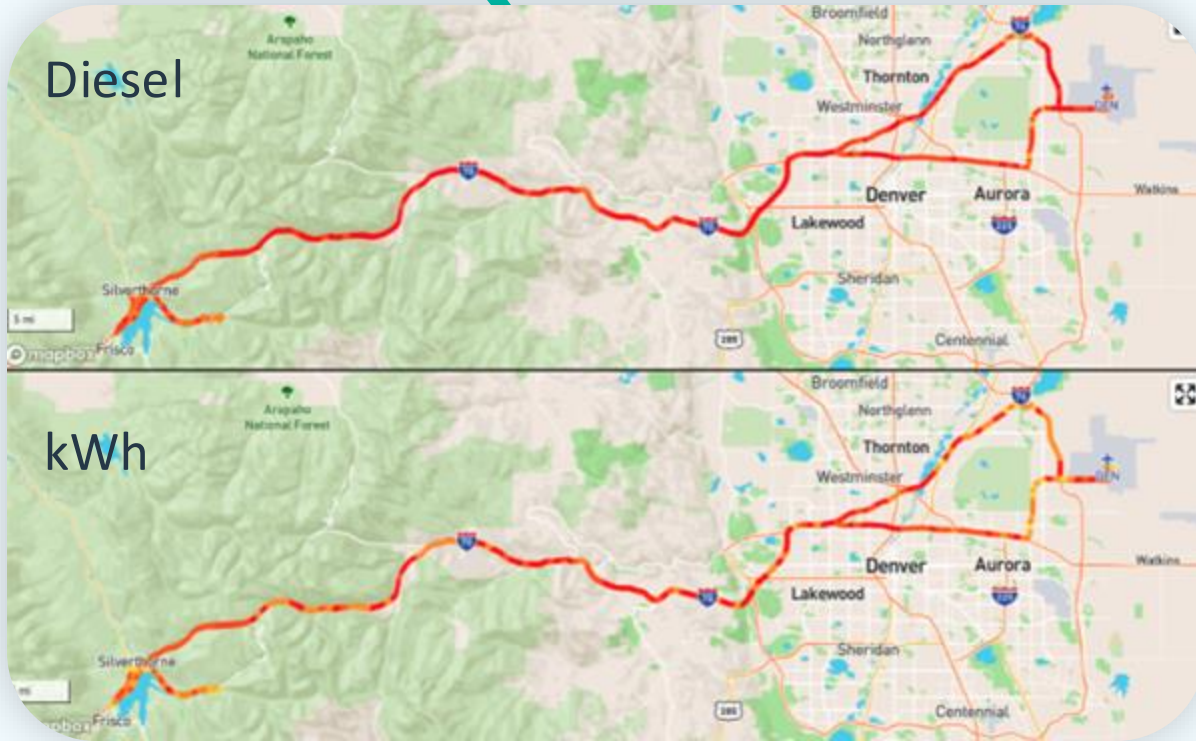
About Sawatch Labs



Sawatch Labs has analyzed more than 71,000 vehicles and approximately 1 billion miles driven, identifying more than \$600,000,000 in potential savings and more than 6,000,000 tons of GHG emissions reductions for its clients.



Advanced energy modeling



- Ambient temperature
- Auxiliary demands
- Loads
- Incline/topography




Building a mixed-energy fleet through EV adoption

Vehicle-specific recommendations:

- Total cost of ownership comparison
- Operational impact
- Dynamic results
- Localized
- Classes 1-8
- Charging needs

Recommended Replacement:
2024 Ford F-150 Lightning Pro

Select Vehicle To Compare:
2024 Ford F-150 Lightning Pro



Observation Period: 03/31/22 - 09/27/22

Days Tracked: 181 Days

Trips Tracked: 703 Trips

Last Trip: 09/27/22

Model: 2019 Chevrolet Silverado

VIN: XXXXXXXXXXX9KS649808

Total Miles: 6,840

Temperature Range: 5°F - 100°F

Midday Charging Needs:
Approx twice a month

95 Overall, 100 Confidence, 94 Energy, 97 Economics, 95 Parking

Economics & Environment | Parking & Charging | Assumptions | Scoring Metrics

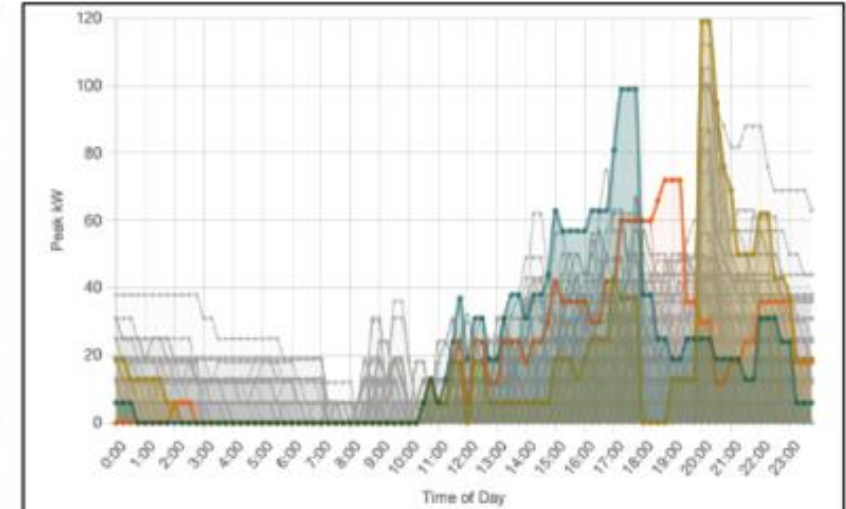
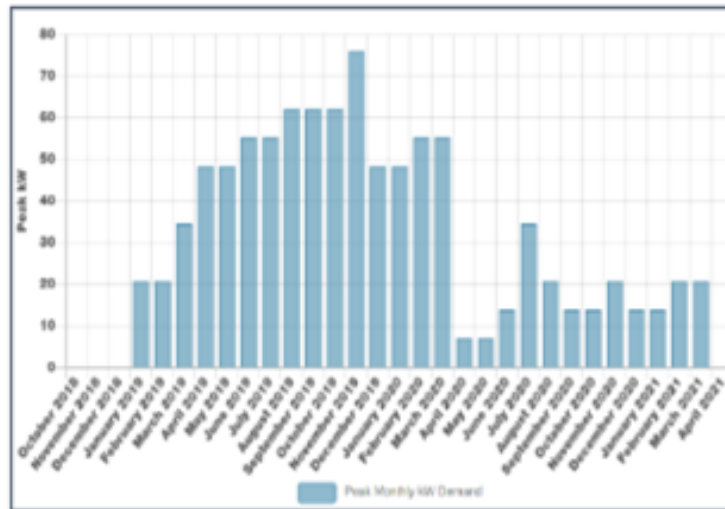
Estimated Operational Metrics in a 2024 Ford F-150 Lightning Pro
These metrics estimate what the usage numbers would be if the miles driven by your 2019 Chevrolet Silverado had been driven in a 2024 Ford F-150 Lightning Pro.

Annual Vehicle Miles Traveled	GHG Reduction (%)	GHG Reduction (lbs)	Operational Cost Difference*	TCO* (Lifetime)	TCO** (%)	Average Daily Idling Hours
13,790	55%	96,730	▼ -\$30,000-33,000	▼ -\$6,000-9,000	▼ -6%	1.2



Right-sized electric vehicle supply equipment (EVSE) - Now and for future planning

- Daily demand curves for all fleet projected charging
- Unmanaged and managed scenarios

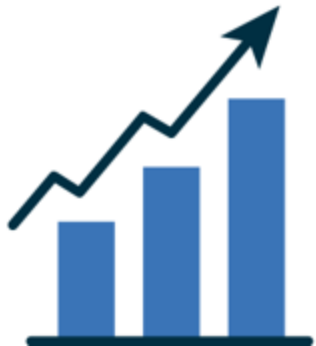


Other benefits to fleet assessment

- Identify high-emitters and explore alternatives for carbon reduction
- Make your business case
- Respond to leadership and the public with objective findings
- Apply for grants and incentives using assessment results
- Forecast low carbon fuel standard (LCFS)



Moving Forward





Partner Synergy

COMMAND 24



- File uploads available for the Total Cost of Ownership (TCO) module.



- Portal integration not currently available.
- Sawatch Labs analysts can use FleetCommander's motor pool data as additional data points to develop your custom EV strategy.



Take Advantage

COMMAND 24



Toll Management

Contact your Agile Fleet Client Success Manager

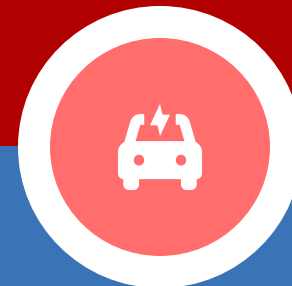
Procurement will be directly through BestPass.
Stay tuned for more purchase options!



EV Strategy

Contact your Agile Fleet Client Success Manager

Procurement will be directly through Sawatch.
Stay tuned for more purchase options!





Questions & Answers

COMMAND 24

What questions do you have for Bestpass, Sawatch Labs, or Agile Fleet?



Other Alliances

COMMAND 24

What other organizations would you like to see join the Alliance program?



Agile Fleet Alliances

COMMAND 24

Next Up

10:00 – 10:30 am
Networking Break



THANK YOU