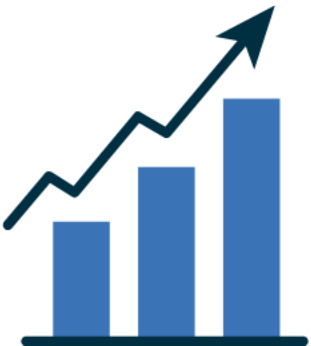
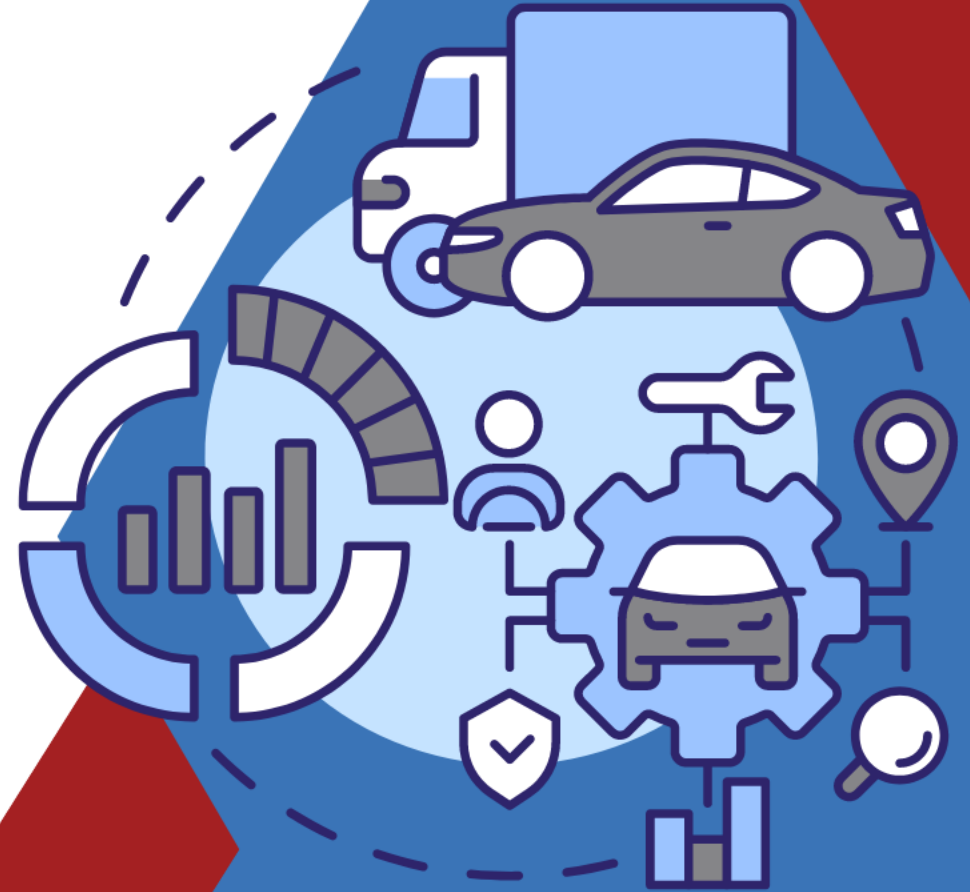


WELCOME TO COMMAND 24

Learn. Network. Engage.





University Roundtable

COMMAND 24



Agenda

- Welcome and Introductions
- Cool Car Stories
- Rules of Engagement
- Roundtable
- Wrap-up

Welcome

- Name
- Institution
- Is your institution private or public?



COMMAND 24

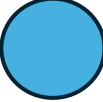


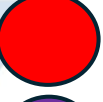
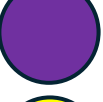



Cool Car Stories

- Please take a new car
- Participants share a story or information based on the color of the car they have



Cool Car Story Guide

-  **Tell us about a KPI that you track, how often you track it, and what you look for.**
-  **What is your greatest accomplishment with your fleet.**
-  **Tell us about the funniest moment at work.**
-  **Tell us one thing you would like to talk about in this session.**
-  **Tell us a time you failed at work and what did you learn from it.**
-  **Tell us about a boss you respected and why.**

Rules of Engagement



WHEN SPEAKING FOR THE FIRST TIME IN THIS SESSION PLEASE INTRODUCE YOURSELF WITH YOUR NAME AND THE FLEET THAT YOU REPRESENT



WE ENCOURAGE EVERYONE TO PARTICIPATE



BE RESPECTFUL OF OTHERS SPEAKING



TURN OFF YOUR CELL PHONES AND BE PRESENT IN THE MOMENT



RAISE YOUR HAND WHEN YOU WOULD LIKE TO SPEAK, AND THE MODERATOR WILL CALL ON YOU

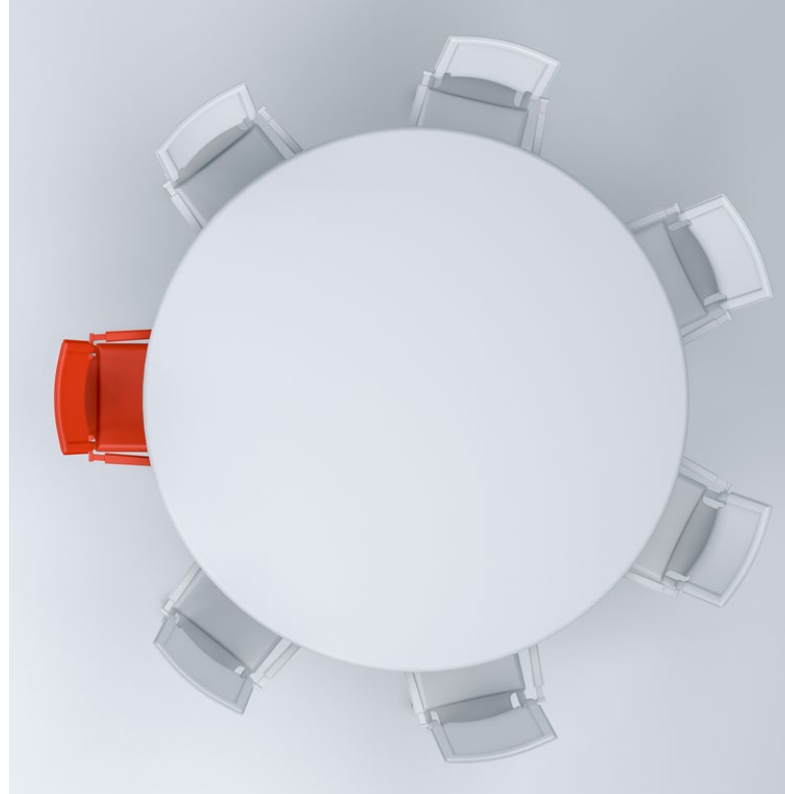


ALL QUESTIONS AND TOPICS ARE IMPORTANT



HAVE FUN AND LEARN FROM EACH OTHER

Higher Education Roundtable



COMMAND 24



Higher Education Roundtable

- What KPIs do you track and why?
- Do you have an EV plan and if so tell us about the plan.
- Do you have a good fleet policy and if so, what is in it?
- Are you having any issues getting vehicles in the current market"
- What is your biggest challenge in fleet right now?



Wrap-Up

COMMAND 24





Questions?



THANK YOU